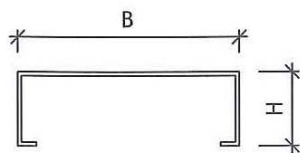


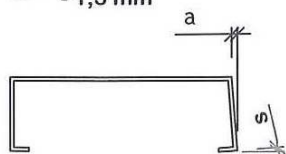
# Tolerantieblad profielroosters **LAS-PERS** ROOSTERFABRIEK

Profielroosters worden geproduceerd en geleverd met inachtneming van onderstaande toleranties, die zijn ontleend aan RAL-GZ 639.  
Niet bedoeld zijn onder druk optredende toleranties (vervormingen)



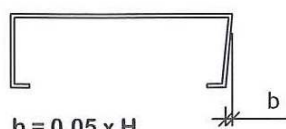
$$B = \begin{matrix} +2,0 \text{ mm} \\ -2,0 \text{ mm} \end{matrix}$$

$$H = \begin{matrix} +1,5 \text{ mm} \\ -1,5 \text{ mm} \end{matrix}$$

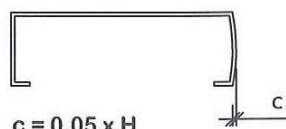


$$a = 0,05 \times H$$

$$s = \text{max. } 2^\circ$$



$$b = 0,05 \times H$$



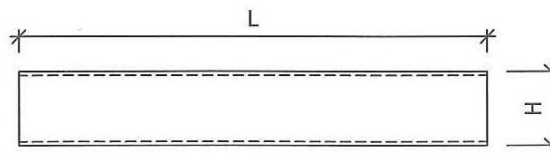
$$c = 0,05 \times H$$



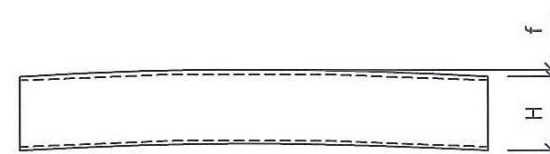
$$d = 0,015 \times B$$



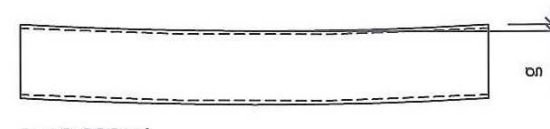
$$e = 0,015 \times B$$



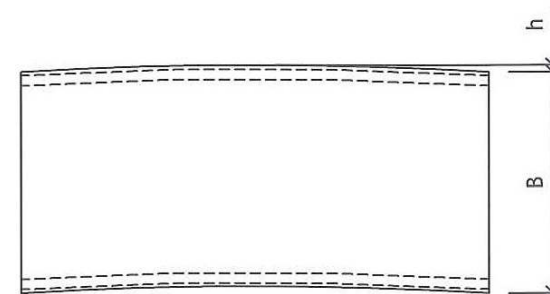
$$L = \begin{matrix} +2,0 \text{ mm} \\ -4,0 \text{ mm} \end{matrix}$$



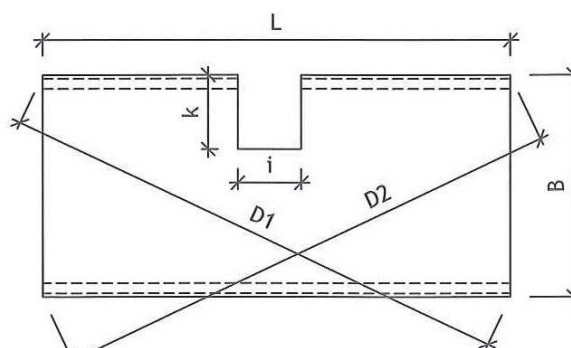
$$f = 0,005 \times L$$



$$g = 0,003 \times L$$



$$h = 0,002 \times L$$



$$i = k = \begin{matrix} +8,0 \text{ mm} \\ -0,0 \text{ mm} \end{matrix}$$

$$D1 - D2 = \text{max. } 0,008 \times L$$